

Important Security Update!

Please reference the browser versions listed below that support TLS 1.1 and higher. If you are using a browser version that is lower than those listed below, you may not be able to access some or all of your online banking services and may need to update your browser version.

Microsoft Internet Explorer (IE): version 11 and higher

Microsoft Edge – all versions

Mozilla Firefox: version 27 and higher

Google Chrome version 38 and higher

Apple Safari

Desktop Safari: versions 7 and higher for OS X 10.9 (Mavericks) and higher (7)

Mobile Safari: versions 5 and higher for iOS 5 and higher

Android

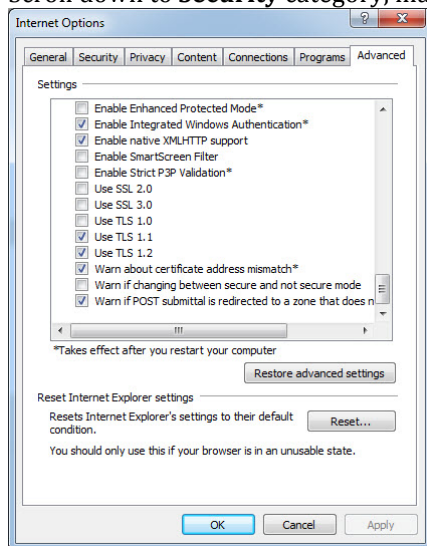
Users operating on Android version KitKat (4.4) and lower, which includes about 20% of the U.S. population according to current usage patterns, may be impacted by the disablement of TLS 1.0 as these versions do not support TLS 1.1 and 1.2.

Upgrading to Lollipop (5.0) or higher will fix this issue and support TLS 1.1 and 1.

We have included step by step instructions on how to update your browsers TLS security settings to 1.1 or higher.

Microsoft Internet Explorer

1. Open **Internet Explorer**
2. From the menu bar, click **Tools > Internet Options > Advanced** tab
3. Scroll down to **Security** category, manually check the option box for **Use TLS 1.1** and **Use TLS 1.2**

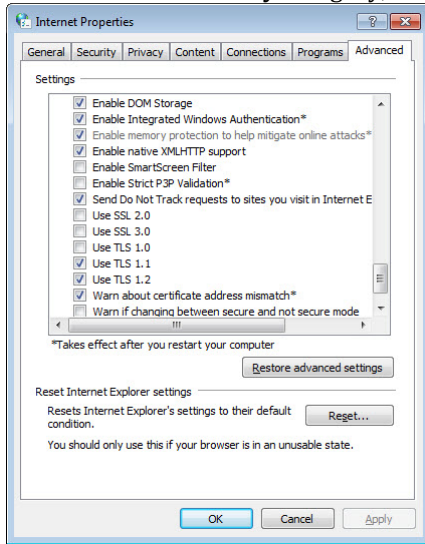


4. Click **OK**
5. Close your browser and restart Internet Explorer

Google Chrome

1. Open **Google Chrome**
2. Click **Alt F** and select **Settings**

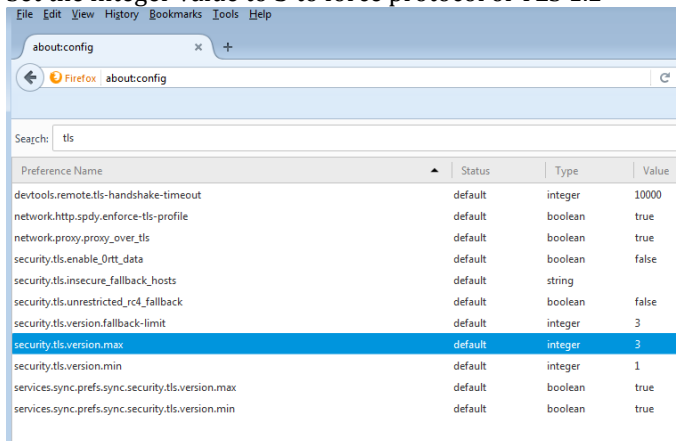
3. Scroll down and click **Advanced**
4. Scroll down to the **Open proxy settings...**
5. Select the **Advanced** tab
6. Scroll down to **Security** category, manually check the option box for **Use TLS 1.1** and **Use TLS 1.2**



7. Click **OK**
8. Close your browser and restart Google Chrome

Mozilla Firefox

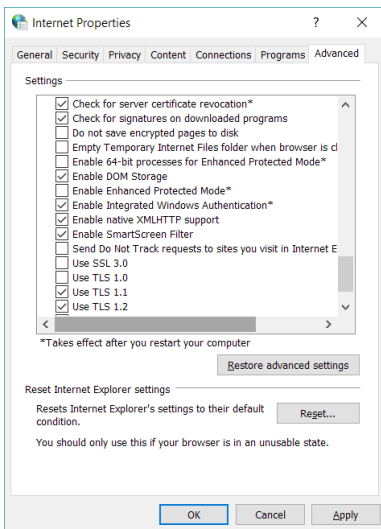
1. Open **Firefox**
2. In the address bar, type **about:config** and press Enter
3. In the **Search** field, enter **tls**. Find and double-click the entry for **security.tls.version.max**
4. Set the integer value to **3** to force protocol of TLS 1.2



5. Click **OK**
6. Close your browser and restart Mozilla Firefox

Microsoft Edge

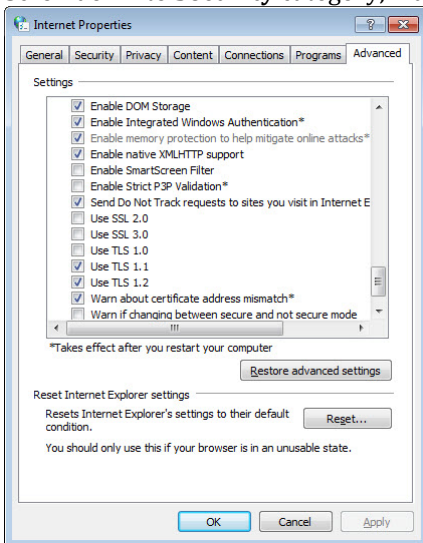
1. Open **Edge**> **Control Panel**> **Internet Options**> **Advanced Tab**
2. Scroll down to **Security** category.
3. Check the boxes for **Use TLS 1.1** and **Use TLS 1.2**



4. **Click OK**
5. Close your browser and restart Microsoft Edge

Opera

1. Open **Opera**
2. Click **Ctrl plus F12**
3. Scroll down to the **Network** section and click on **Change proxy settings...**
4. Select the **Advanced** tab
5. Scroll down to **Security** category, manually check the option box for **Use TLS 1.1** and **Use TLS 1.2**



6. Click **OK**
7. Close your browser and restart Opera

Apple Safari

There are no options for enabling SSL protocols. If you are using Safari version 7 or greater, TLS 1.1 and TLS 1.2 are automatically enabled.